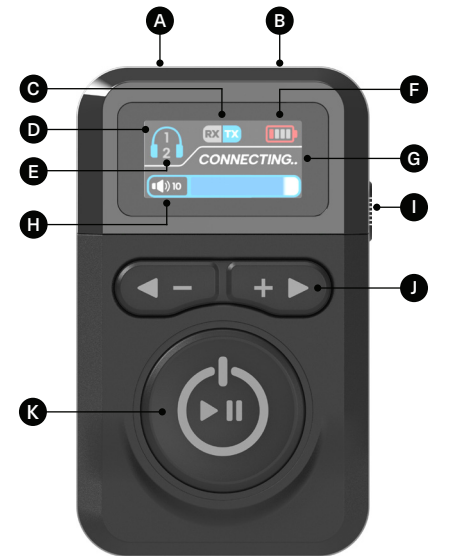


Cygnett and the Cygnett logo are trademarks of Cygnett Pty Ltd. Other brands and product names are trademarks or registered trademarks of their respective holders. Made in China. Cygnett.com

Cygnett Pty Ltd 858 Lorimer St, Port Melbourne, Victoria 3207 Australia
Cygnett EU Authorised Representative 24hour-AR
Van Nelleweg 1, 3044 BC Rotterdam, The Netherlands
compliance@24hour-ar.com
Cygnett USA Inc 3838 W Carson St, Ste 220, Torrance, CA 90503
Cygnett UK Ltd 71-75 Shelton St, London, WC2H 9JQ
Cygnett NZ Ltd Level 9, 45 Queen Street, Auckland 1010



- A AUX Port
- B USB-C Input
- C RX/TX Mode Icon
- D RX/TX Icon Display
- E Number of Devices Connected (TX Mode Only)
- F Battery Level Indicator
- G Connection Status
- H Name of Connected Devices / Volume
- I RX/TX Mode Switch
- J Volume / Next / Back Button
- K Power On / Off / Play / Pause Command Button

Product Specifications

Name	Voyager Wireless Elite Audio Adaptor
Item Number	CY5163VOYAA / CY5164VOYAA
USB-C Input	5.0V–0.5A (2.5W)
BT Version	5.0
BT Compatibility	V4.2/V4.2 LE/V4.0/V3.0/V2.1 + EDR systems
Connection Range	10m
Playback	Up to 30hrs
Charging Time	Up to 2hrs
Working Frequency Band	2402MHz - 2480MHz
Max Power Output	3.28dBm

Caution


Please read all warnings for your safety and optimal user experience. Please read and follow these instructions carefully and retain for your records.

- Do not disassemble or throw into fire or water.
- Do not microwave, incinerate, paint, or insert foreign objects into the product.
- Do not expose to extreme weather conditions.
- Do not use this product if you observe visible defects.
- Do not short circuit the product or store it in a receptacle where it may be short circuited by other metallic or conductive objects.
- Do not operate the product if it has been wet or otherwise damaged, to prevent against electric shock, explosion and/ or injury.
- Never attempt to dismantle the unit.
- Children should be supervised to ensure that they do not play with the product.
- Do not leave product/device unattended (e.g., leaving in the car).
- Always disconnect the device when not in use.
- Not to be used in extremely high ambient temperatures.
- Do not use with damaged or faulty accessories.
- Do not place near any sources of heat, open flame, or liquid.

References

If this equipment does cause harmful interference to radio or television reception, which can be determined by turning the equipment off and on, the user is encouraged to try to connect the interference by one or more of the following measures:

- Reorient or relocate the receiving antenna.
- Increase the separate between the equipment and receiver.
- Connect the equipment into an outlet on a circuit different from that to which the receiver is connected.
- Consult the dealer or an experienced radio/TV technician for help.

 This symbol on the product indicates that this product shall not be treated as household waste. Instead it shall be sent to the applicable collection ensuring this product is disposed of correctly, you will help prevent potential negative consequences for the environment and human health. For more information about the recycling of this product, please contact your local city office.

Complies with
IMDA Standards
DA106100

Warranty

Cygnett guarantees to the end use of this product that it is free from defects in material and workmanship – and that if used in accordance with any accompanying labels or instructions, it will perform as specified. This warranty does not cover loss, theft, damages caused by accident, misuse, modification, or normal wear and tear. You are also entitled to have the product repaired or replaced if the product fail to be of acceptable quality and the failure does not amount to a major failure. This warranty is governed by the laws the country in which you purchased your Cygnett product. The product must have been purchased through an authorized dealer. Please note that changes or modifications not expressly approved by the party responsible for compliance could void the user's authority to operate the equipment. Cygnett takes no responsibility for damages caused by incorrect use of its products.

CYGNETT®

Voyager Wireless
Elite Audio Adaptor

User Manual

Quick Start Guide

Turn On Audio Adaptor:

1. Press and hold the power button for 3 seconds.
2. Put Headphones in Pairing Mode.

Enter Pairing Menu (TX Mode):

1. Double press the power button on the audio adaptor.
2. Select Headphones: Use < or > to scroll through devices, then press the power button to select your headphones.

Connect AUX Cable:

Plug one end of the AUX cable into the headphones port and the other end into the audio adaptor.