

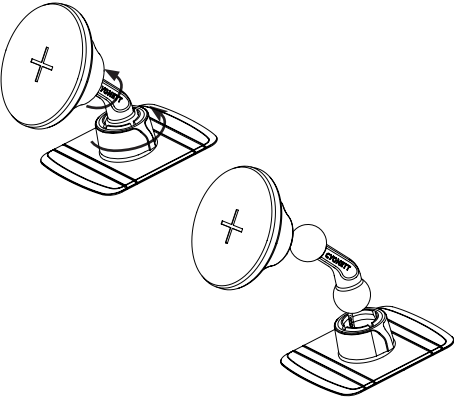
### Changing the mounting arms

Step 1: Locate the tightening collar (D & G) on the MagDrive Adhesive Mount.

Step 2: Turn the tightening collar anticlockwise to loosen it.

Continue turning until it becomes loose enough to remove.

Step 3: Once the tightening collar is sufficiently loose, gently pull the existing mounting arm (H) away from the ball joint (E & F). The arm should detach from the ball joint.

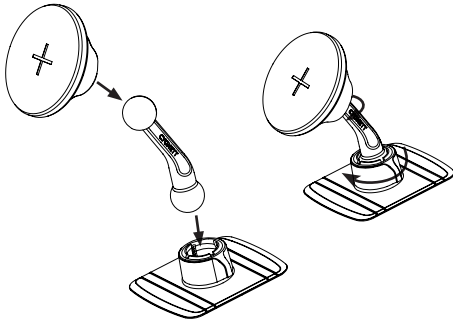


Step 4: Take either the 45mm (H) or 70mm (I) mounting arm that you want to install.

Step 5: Place the tightening collar (D & G) over the ball joint (E & F) at the end of the mounting arm.

Step 6: Make sure that one end of the mounting arm is connected to the MagDrive magnetic head (A), and the other end is positioned to connect to the adhesive mounting plate (B).

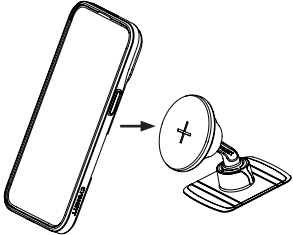
Step 7: With the mounting arm connected at both ends, rotate the tightening collar (D & G) clockwise to tighten it onto the ball joint (E & F). Keep turning until the mounting arm is securely fastened.



### Attaching your phone

- Compatible for any Apple iPhone 12 devices and above, place the back of the phone onto the MagDrive magnetic head (A).

- For other device types, simply apply the metal magnetic ring part no. CY3890MAGRI (not included) to the outside of the device. Attach your device onto the MagDrive magnetic head (A).



### Product Specifications

Name	MagDrive Magnetic Adhesive Mount
Item Number	CY4625WLCCH

### Warranty

Our goods come with guarantees that cannot be excluded under the Australian Consumer Law (or local consumer law). You are entitled to a replacement or refund for a major failure and for compensation for any other reasonably foreseeable loss or damage. You are also entitled to have the goods repaired or replaced if the goods fail to be of acceptable quality and the failure does not amount to a major failure. Cygnett warrants this product against defects in workmanship and material for a period of two (2) years from its original purchase date. You must present your receipt as proof of date of purchase for warranty validation. Please read the following information carefully and retain this warranty card for any warranty claim.

Cygnett and the Cygnett logo are trademarks of Cygnett Pty Ltd. Other brands and product names are trademarks or registered trademarks of their respective holders. Made in China.

Cygnett Pty Ltd  
858 Lorimer Street, Port Melbourne,  
Victoria, 3207, Australia

Cygnett USA Inc  
3838 W Carson St, Ste 220, Torrance,  
CA 90503

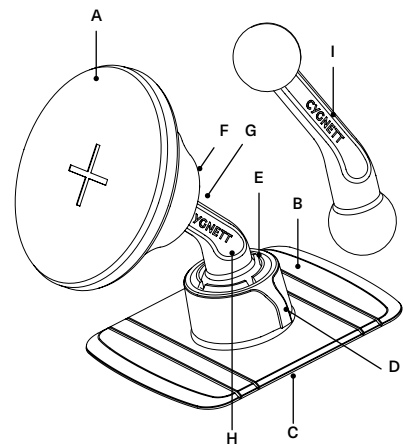
Cygnett UK Limited  
71-75 Shelton St, London,  
WC2H 9JQ

Cygnett EU Authorised Representative  
24hour-AR  
Van Nelleweg 1, 3044 BC Rotterdam, The  
Netherlands  
compliance@24hour-ar.com

# CYGNETT®

## MagDrive Magnetic Adhesive Mount

### User Manual



- A MagDrive Magnetic Head
- B Mounting Plate
- C 3M™ Adhesive Pad
- D Tightening Collar
- E Ball Joint
- F Tightening Collar
- G Ball Joint
- H 45mm Mounting Arm
- I 70mm Mounting Arm

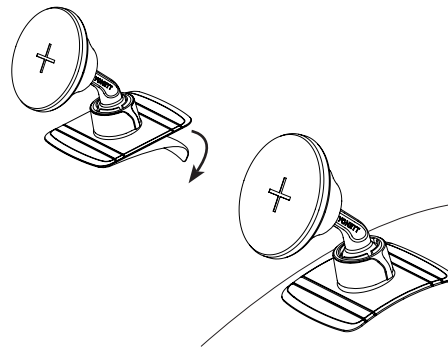
#### Installing MagDrive adhesive mount

Step 1: Ensure the desired surface is free from dust, oils, debris and a non-textured surface for best adhesion.

Step 2: Peel off the protection backing from the 3M™ Adhesive pad (B).

Step 3: Position the MagDrive Adhesive Mount in the desired location.

Note: The Adhesive Mount is not recommended for use on motorcycles, scooters, ATVs, or other high frequency engine vibrations.

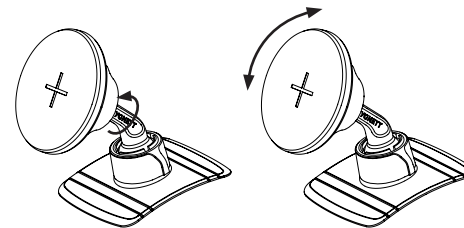


#### Adjusting MagDrive magnetic head

Step 1: To adjust the viewing angle turn the tightening collar (G) anti-clockwise.

Step 2: Adjust the MagDrive magnetic head (A) to your desired viewing angle.

Step 3: Once the MagDrive magnetic head is at the desired viewing angle turn the tightening ring (G) clockwise to secure the MagDrive magnetic head (A) in position.



#### Adjusting MagDrive mounting arm

Step 1: To adjust the viewing angle turn the tightening collar (D) anti-clockwise.

Step 2: Adjust the mounting arm to your desired viewing angle.

Step 3: Once the mounting arm is in the desired viewing angle turn the tightening ring (D) clockwise to secure the MagDrive magnetic head (A) in position.

